

TC - Cuesta de las Tablas 6,77 Kms



28° 22' 37,37" N
16° 22' 02,03" O

SALIDA del Tramo

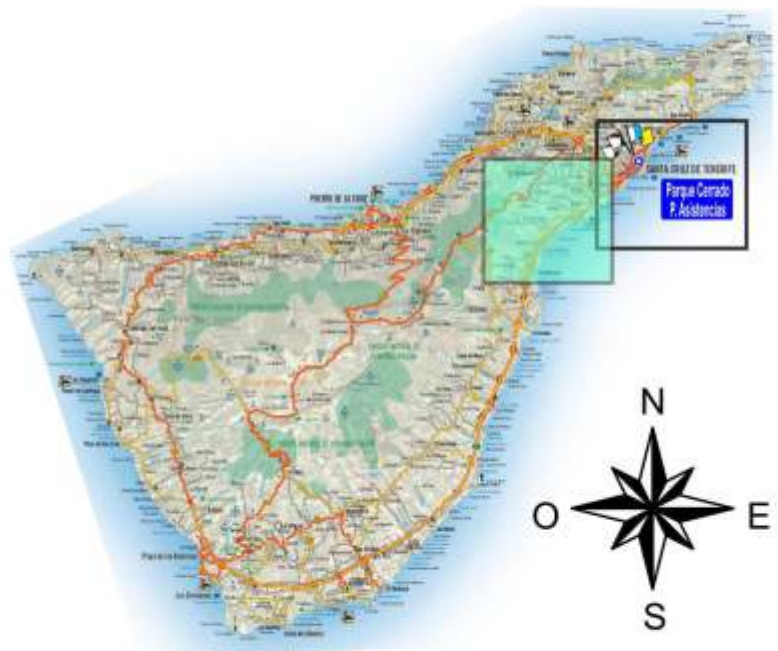


28° 24' 30,17" N
16° 20' 07,57" O

META del Tramo

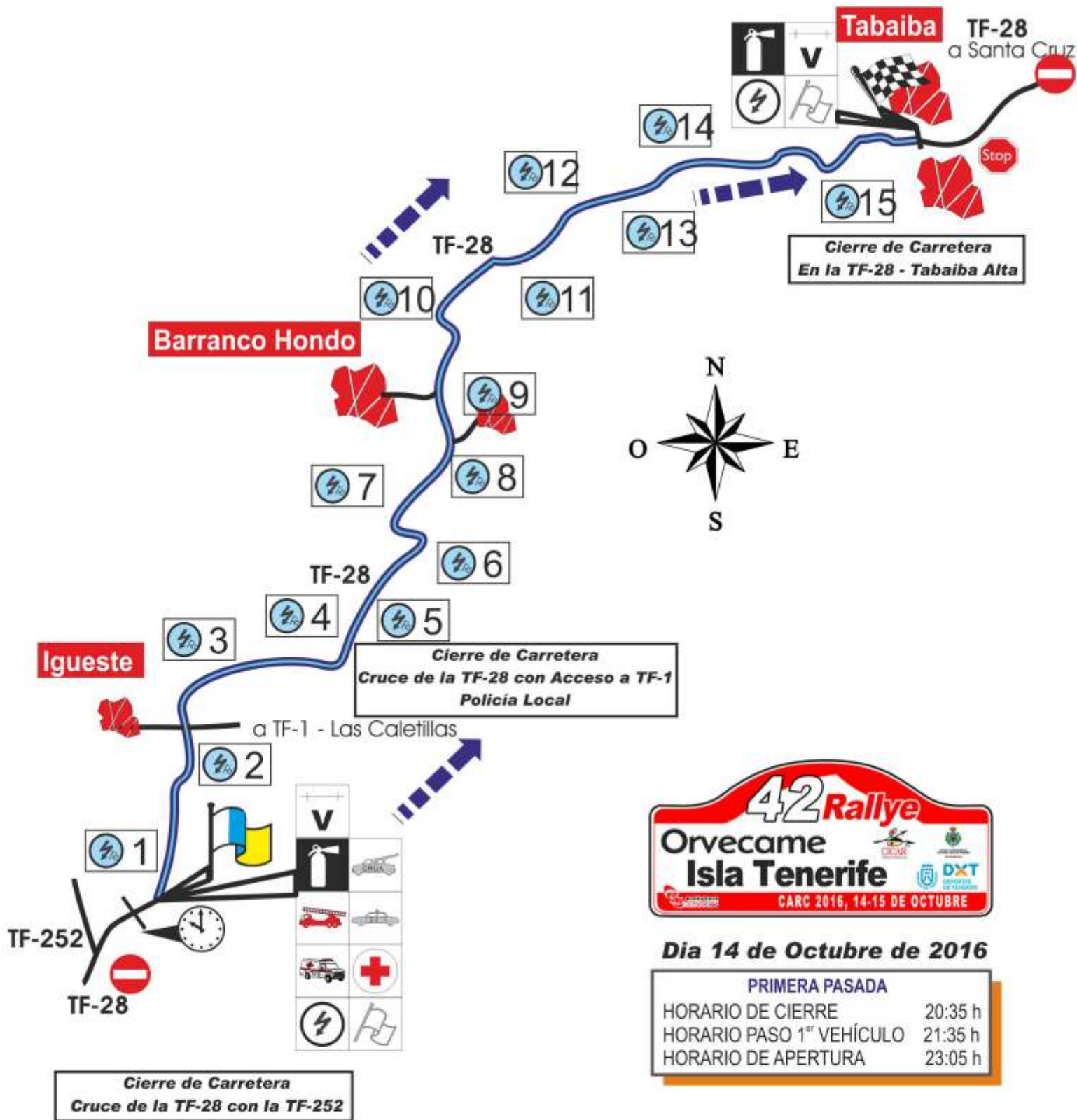


Tramo Cronometrado



TC-1 CUESTA DE LAS TABLAS

6'77 Kms.



TC - Cuesta Las Tablas 6,77 Kms

Cierre de Carretera, Control Horario y Salida



TC - Cuesta Las Tablas 6,77 Kms

ZONA ESPECIAL 1, Cruce TF-28 - Caletillas - Igueste (0,79 Kms)

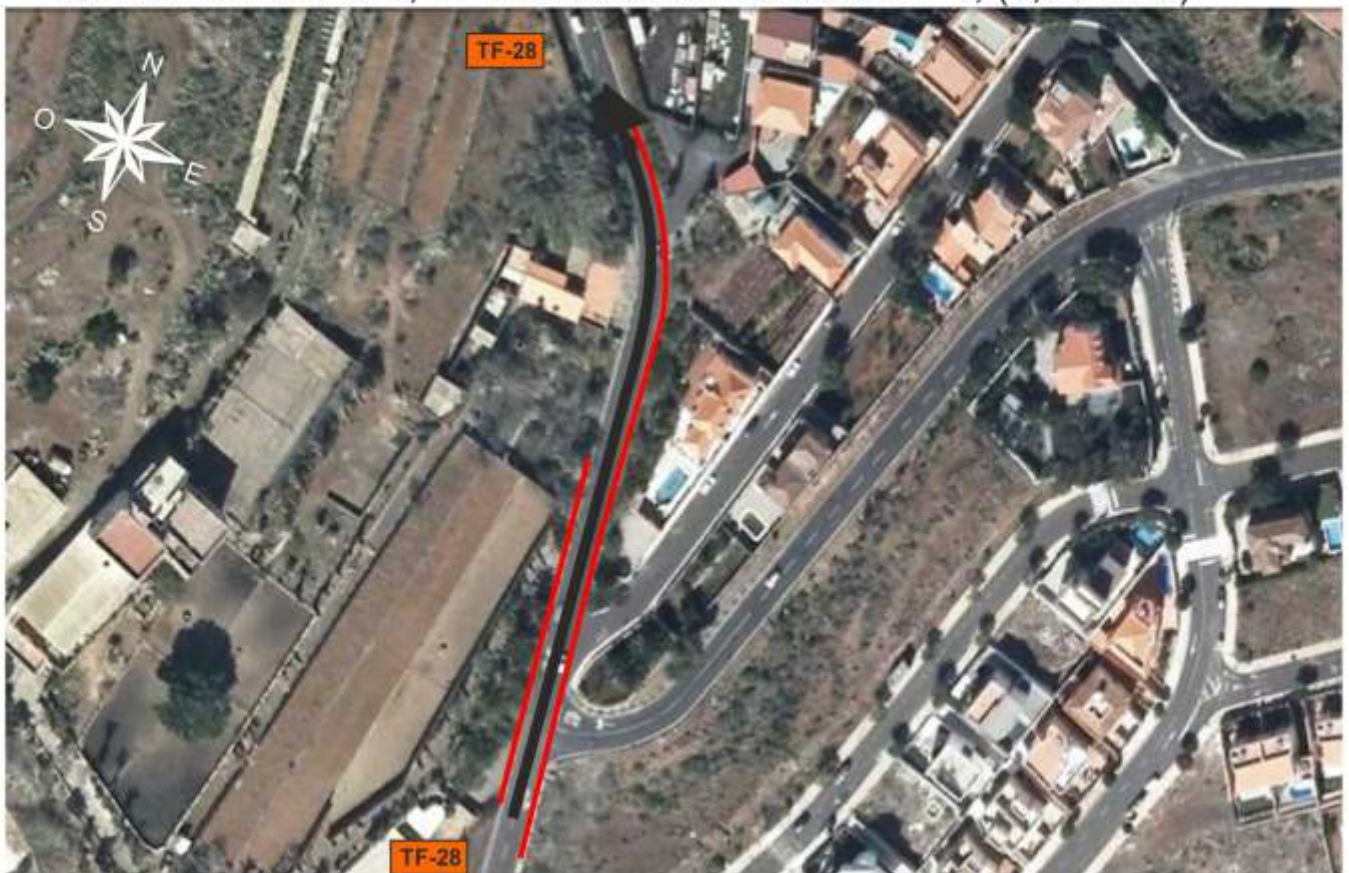


ZONA ESPECIAL 2, TF-28 P.K. 12.500, (2,89 Kms)



TC - Cuesta Las Tablas 6,77 Kms

ZONA ESPECIAL 3, TF-28 Barranco Hondo a TF-1, (3,90 Kms)

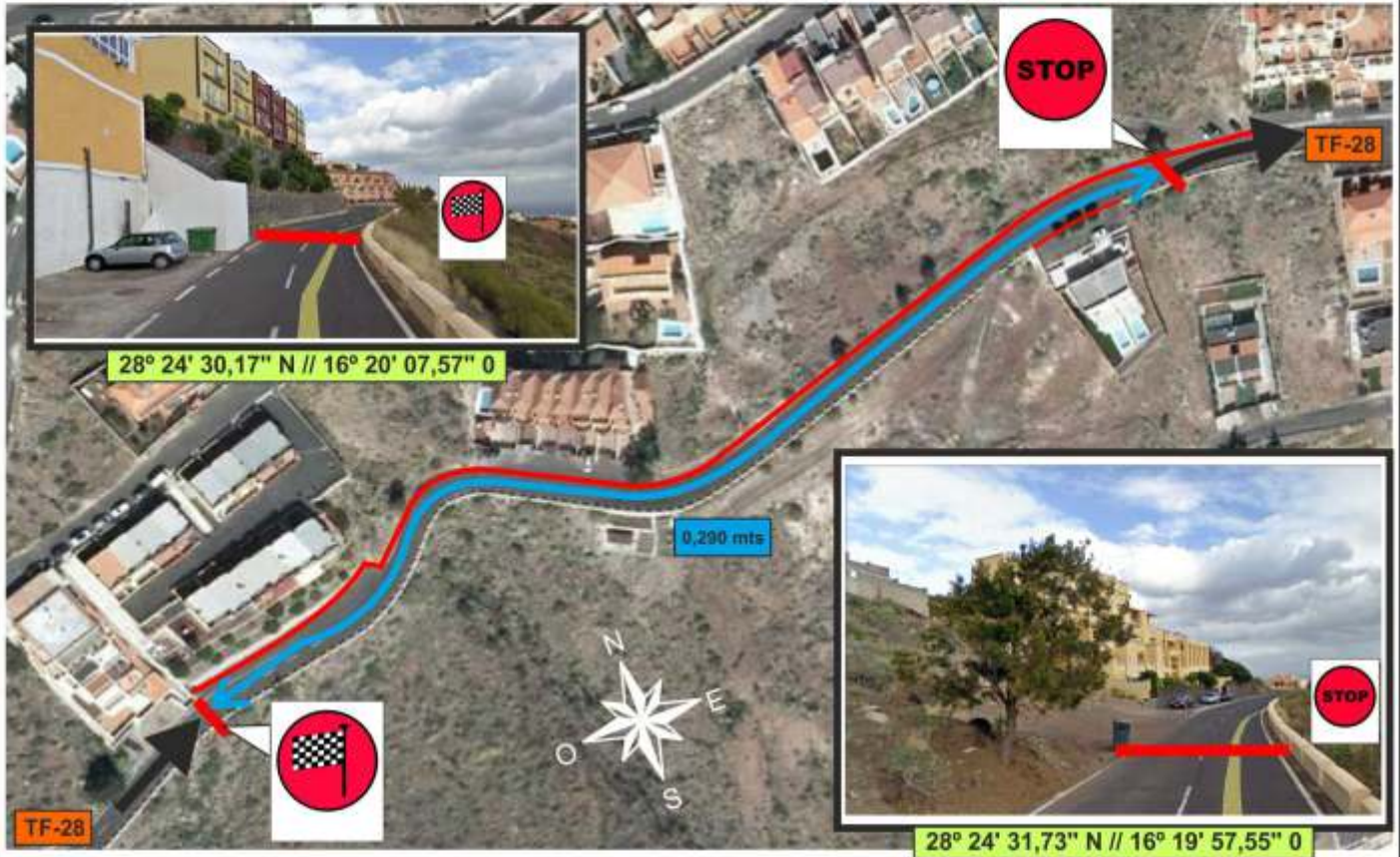


ZONA ESPECIAL 4, TF-28 Cruce Barranco Hondo (4,44 Kms)



TC - Cuesta Las Tablas 6,77 Kms

Meta y Control Stop. TF-28 Aptos. Angélica (6,77 Kms)



Cierre de Carretera, TF-28 cruce Tabaiba Alta (7,06 Kms)

